



HYMAX[®] ELBOW 45° AND 90° (2"-24")

HYMAX[®]
Repair the past. Connect the future.

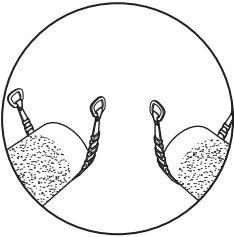
INSTALLATION INSTRUCTIONS

DO NOT DISASSEMBLE THE COUPLING. DO NOT LUBRICATE THE BOLTS.

GENERAL INSTRUCTIONS:

THE HYMAX ELBOW IS A STAB-ON TYPE COUPLING.

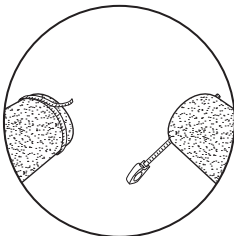
STEP 1



Prepare both pipe ends by descaling if required. Clean the pipes as required using water. Make sure that the pipe is clear from debris and defects that may interfere with the HYMAX Elbow's proper seal.

NOTE: Except steel, PVC, and PE pipes, all rough-surfaced pipes must be lubricated with a water-based gasket lubricant in order to achieve a proper seal.

STEP 2



Measure both pipes' outer diameters and make sure the Elbow's size will fit the pipes properly on both sides.

NOTE: Each coupling's size range is shown on the product's label. Ensure that the pipes are not out of round and free of scratches, dents, flats or other defects which may interfere with the Elbow's proper seal. The Elbow may not fit well or function properly on pipe which is out of round or damaged.

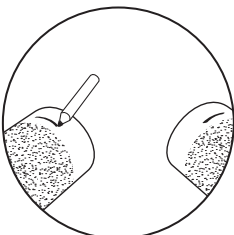
STEP 3

Unpack the HYMAX Elbow. Carefully remove the HYMAX Elbow from its packaging. Inspect the HYMAX Elbow, if the end rings are not centered on the coupling do not use! Contact your distributor for return and replacement!

NOTE: The HYMAX Elbow is a stab on coupling. Do not remove the end ring bolts.

NOTE: Bolts are pre-lubricated with a MAG (Molecular Anti Galling) dry coating. Do not lubricate the bolts and nuts. Greasing or lubricating bolts or nuts voids manufacturer's warranty.

STEP 4

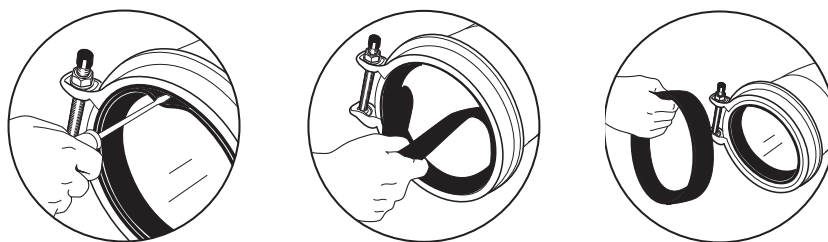


Mark each pipe end to a minimum required stab depth as indicated on the product label. This mark indicates the required stab depth for the coupling.

STEP 5

The Elbow's gasket system has two layers, a removable inner gasket and a hydraulically assisted outer gasket. The inner gasket can be removed to accommodate larger OD pipes. DO NOT remove the inner gasket unless the OD falls within the upper range of the coupling. The proper range sizes are shown on the product label. If the inner layer of the gasket must be removed, fold the inner layer, then break the parting line by inserting a screwdriver and pulling the gasket out of the coupling.

NOTE: Measure the OD of the pipe TWICE using an OD tape! Once the inner gasket is removed it can NOT be re-installed!



STEP 6

Position the coupling for installation. Place the coupling with top-facing bolts. Slide the coupling so that it covers the marks made in step 4.

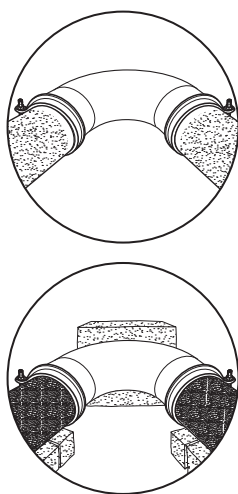
Make sure that the pipes are properly supported.

NOTE: The HYMAX Elbow does not offer restraint against longitudinal separation and is not designed to carry the weight of the pipes by itself. Therefore the use of pipe restraint and/or thrust blocks may be required.

For uncoated ductile iron, grey cast iron and asbestos cement pipe surfaces - appropriate water-based gasket lubricant is required on both gaskets inner surface and pipe's outer surface. Do not lubricate PVC, steel or any PE pipe surfaces.

DO NOT LUBRICATE BOLTS!

NOTE: HYMAX Elbow does not offer restraint against longitudinal separation and therefore the use of pipe restraint and/or thrust blocks may be required.



STEP 7

Tightening the end rings. Tighten the Elbow's bolts using a 3/4" socket wrench for 2"-3" couplings, a 7/8" socket wrench for 4"-12" couplings, and a 15/16" socket wrench for 14"-24" couplings. Tighten the bolts evenly on each end ring in an alternating pattern to the torque mentioned on the label. Cross-tightening ensures that the gasket is evenly seated. When you finish, re-check the torque again.

DO NOT LUBRICATE BOLTS !

NOTE: Use of a torque wrench is required! The torque wrench will verify that the proper torque has been achieved. Refer to the product label for the proper torque settings.





STEP 8

Recharge the line and check for leaks. If any leakage is evident, reduce the pressure in the line and increase bolt's torque up to 50%. Verify again there are no leaks along the seal.

INSTALLATION INSTRUCTIONS

HYMAX® ELBOW 45° AND 90° 2"-24"

HYMAX®
Repair the past. Connect the future.

 WARNING	This product does not restrain axial pipe movement. Proper anchorage of the pipe is required if this product is used as a coupling. Failure to anchor the pipe ends could result in the escape of line content, and may cause property damage, serious injury or death.
 WARNING	Caution: This product is not intended for use on natural gas piping, or any other type of gas piping. To do so could result in escaping gas that could ignite and cause property damage, serious injury or death.

KRAUSZ USA. 331 SW 57TH AVENUE, OCALA, FLORIDA 34474 • INFO@KRAUSZUSA.COM

FOR ORDERING INFORMATION OR TO SPEAK WITH A KRAUSZ REPRESENTATIVE PLEASE CONTACT US AT:
855-457-2879 OR 855-4KRAUSZ. • FAX: 352-304-5787 • WWW. KRAUSZUSA.COM

Hymax® is a registered trademark of Krausz Industries Ltd.

II0042 REV C

 **KRAUSZ** is the creator of HYMAX