



HYJOINT® AND HYJOINT LONG BODY COUPLING

(2"-24", NBR GASKET)

HYMAX®
Repair the past. Connect the future.

INSTALLATION INSTRUCTIONS

DO NOT DISASSEMBLE THE COUPLING. DO NOT LUBRICATE THE BOLTS.

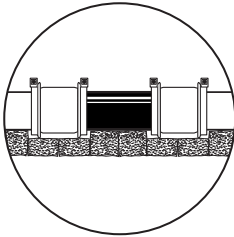
GENERAL INSTRUCTIONS:

THE HYJOINT COUPLING IS A STAB ON TYPE COUPLING.

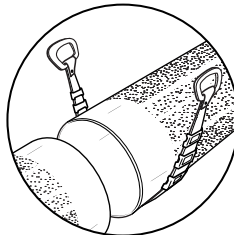
NOTE: DO NOT LOOSEN THE BOLTS ON THE END RINGS.

NOTE: BOLTS ARE PRE-LUBRICATED WITH A DRY COATING. DO NOT LUBRICATE NUTS/BOLTS. LUBRICATING NUTS/BOLTS VOIDS WARRANTY.

NOTE: MAKE SURE YOU HAVE PROPER SUPPORT FOR THE PIPES. THE HYJOINT IS NOT DESIGNED TO CARRY THE PIPES' WEIGHT.

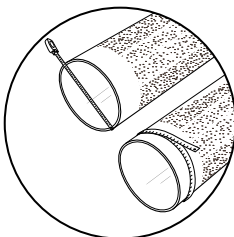


STEP 1



Prepare the pipe ends. Clean and de-scale each pipe end. Remove any debris or build up on the pipe ends and clean the outer pipe surface with water. Clean each pipe end to a distance that is equal to the length of the coupling body or center ring. Make sure there is no corrosion on the outer pipe ends that could affect the gasket seal.

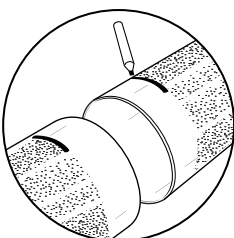
STEP 2



A suitable water-based gasket lubricant must be used on rough surfaced pipe to ensure proper seal. Begin by selecting the HYJOINT Coupling that fits the nominal pipe diameter.

NOTE: Do not lubricate steel, PVC, and PE pipe surfaces.

STEP 3



Determine the stab depth of the coupling on the pipe and mark the pipe accordingly.

Make sure that the pipe end is positioned at least 1.75" past the end of the product inside the coupling.

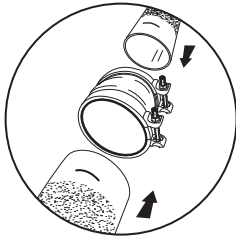
INSTALLATION INSTRUCTIONS

HYJOINT® AND HYJOINT LONG BODY COUPLING 2"-24"

HYMAX®
Repair the past. Connect the future.

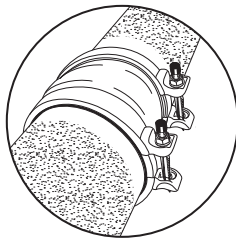
STEP 4

Stab the HYJOINT coupling over the pipe end with bolts positioned towards the top of the pipe.



STEP 5

Stab the outer end of the pipe/s into the coupling covering the marks made (Step 3).

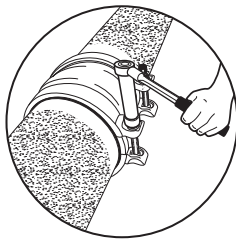


STEP 6

Tightening the end rings. Tighten the HYJOINT's bolts using a 3/4" socket wrench for 1.5"-6" couplings, a 7/8" socket wrench for 8"-16" couplings, and a 15/16" socket wrench for 18"-24" couplings. Tighten the bolts evenly on each end ring in an alternating pattern to the torque mentioned on the label. Cross-tightening ensures that the gasket is evenly seated. When you finish, re-check the torque again.

DO NOT LUBRICATE BOLTS!

NOTE: Use of a torque wrench is required! The torque wrench will verify that the proper torque has been achieved. Refer to the product label for the proper torque settings.



STEP 7

Recharge the line and check for leaks. If any leakage across the seal end is evident, reduce the pressure in the line and increase the labeled torque of the end ring bolts by up to 50%.


	WARNING
	This product does not restrain axial pipe movement. Proper anchorage of the pipe is required if this product is used as a coupling. Failure to anchor the pipe ends could result in the escape of line content, and may cause property damage, serious injury or death.

KRAUSZ USA. 331 SW 57TH AVENUE, OCALA, FLORIDA 34474 • INFO@KRAUSZUSA.COM

FOR ORDERING INFORMATION OR TO SPEAK WITH A KRAUSZ REPRESENTATIVE PLEASE CONTACT US AT:
855-457-2879 OR 855-4KRAUSZ. • FAX: 352-304-5787 • WWW. KRAUSZUSA.COM

HYJOINT is an original product of Krausz Industries Ltd.

II0043 REV B

 **KRAUSZ** is the creator of HYMAX