



HYMAX[®] GRIP ELBOW

45° AND 90°

(4"-12")

HYMAX[®]
Repair the past. Connect the future.

INSTALLATION INSTRUCTIONS

DO NOT DISASSEMBLE THE COUPLING. DO NOT LUBRICATE THE BOLTS.

GENERAL INSTRUCTIONS:

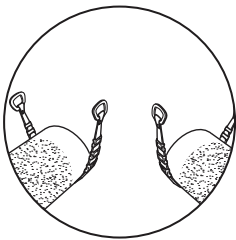
THE HYMAX GRIP ELBOW IS A STAB-ON TYPE RESTRAINT THAT IS APPROVED FOR USE WITH METAL AND PLASTIC PIPES.

WARNING: DO NOT ATTEMPT TO USE THE HYMAX GRIP ELBOW ON AC OR FRP PIPE!

PRECAUTIONS FOR HDPE PIPE: THE USE OF FULL CIRCLE STIFFENERS IS REQUIRED WHEN USING THE HYMAX GRIP ELBOW ON HDPE PIPE.

FOR OTHER MATERIALS, PLEASE CONTACT KRAUSZ USA OR YOUR KRAUSZ DEALER.

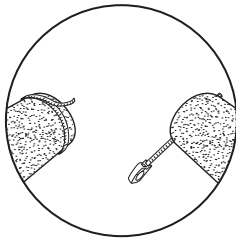
STEP 1



Prepare both pipe ends by descaling if required. Clean the pipes as required using water. Make sure that the pipe is clear from debris and defects that may interfere with the HYMAX GRIP Elbow's proper seal.

NOTE: Except steel, PVC, and PE pipes, all rough-surfaced pipes must be lubricated with a water-based gasket lubricant in order to achieve a proper seal.

STEP 2



Measure both pipes' outer diameters and make sure the Elbow's size will fit the pipes properly on both sides.

NOTE: The GRIP Elbow's size range is shown on the product's label. Ensure that the pipes are not out of round and free of scratches, dents, flats or other defects which may interfere with the GRIP Elbow's proper seal. The GRIP Elbow may not fit well or function properly on pipe which is out of round or damaged.

STEP 3

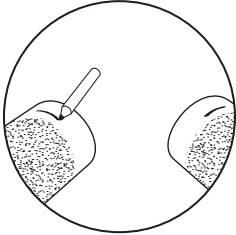
Unpack the GRIP Elbow. Carefully remove the GRIP Elbow from its packaging. Inspect the GRIP Elbow, if the end rings are not centered on the elbow do not use! Contact your distributor for return and replacement!

NOTE: The GRIP Elbow is a stab on coupling. Do not remove the end ring bolts.

NOTE: Bolts are pre-lubricated with a MAG (Molecular Anti Galling) dry coating. Do not lubricate the bolts and nuts. Greasing or lubricating bolts or nuts voids manufacturer's warranty.

STEP 4

Mark each pipe end to a minimum required stab depth as indicated on the product label. This mark indicates the required stab depth for the GRIP Elbow.



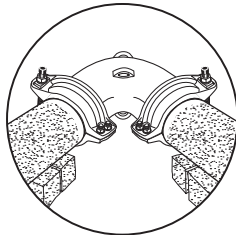
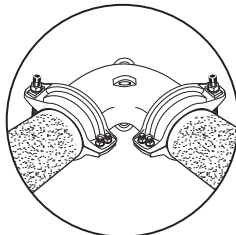
STEP 5

Position the GRIP Elbow for installation. Place the GRIP Elbow with top-facing bolts. Slide the GRIP Elbow so that it covers the marks made in step 4.

Make sure that the pipes are properly supported.

For uncoated ductile iron, grey cast iron and asbestos cement pipe surfaces - appropriate water-based gasket and pipe's outer surface. Do not lubricate PVC, steel or any lubricant is required on both gaskets inner surface PE pipe surfaces.

DO NOT LUBRICATE BOLTS!

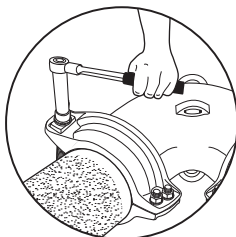


STEP 6

Tighten the end rings using a torque wrench, to the correct torque shown on the product's label. By tightening bolts the GRIP Elbow is steadily stabbed on the pipe.

DO NOT LUBRICATE BOLTS !

NOTE: Use of a torque wrench is required! The torque wrench will verify that the proper torque has been achieved. Refer to the product label for the proper torque settings.



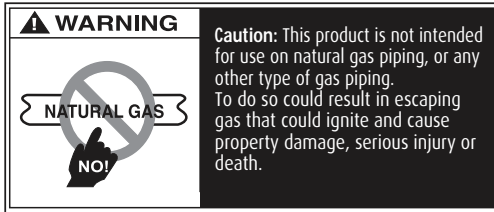
STEP 7

Recharge the line and check for leaks. If any leakage is evident, reduce the pressure in the line and increase bolt's torque up to 50%. Verify again there are no leaks along the seal.

INSTALLATION INSTRUCTIONS

HYMAX® GRIP ELBOW 45° AND 90° 4"-12"

HYMAX®
Repair the past. Connect the future.



KRAUSZ USA. 331 SW 57TH AVENUE, Ocala, FLORIDA 34474 • INFO@KRAUSZUSA.COM

FOR ORDERING INFORMATION OR TO SPEAK WITH A KRAUSZ REPRESENTATIVE PLEASE CONTACT US AT:
855-457-2879 OR 855-4KRAUSZ. • FAX: 352-304-5787 • WWW. KRAUSZUSA.COM

Hymax® is a registered trademark of Krausz Industries Ltd.

II0060 REV A

KRAUSZ is the creator of HYMAX